



PANTONE™
Lifestyle Collection

5	Sustainability
8	Color of the Year

16 Work Collection

22	Gatefold Notebooks
25	Notebook Small
26	Notebook Large
27	Booklets Set of 2
28	Sticky notepad with Penhole
30	Pencil Cup
32	Ruler 30 cm / 12"

34 Meet Collection

36	Candle Holders Set of 2
38	Bowl 500 ml / 17 oz
40	Macchiato 100 ml / 3.4 oz
42	Cortado 170 ml / 5.7 oz
44	Latte 210 ml / 7.4 oz
46	Espresso cup 100 ml / 3.4 oz
48	Original Mug 375 ml / 12.7 oz
52	Tea cup 475 ml / 16 oz
54	Jar / Vase 1000 ml / 34 oz
56	Mini Jar / Mini Vase 500 ml / 17 oz

58 Move Collection

60	Adjustable Phonestrap
62	Tote Bag with inner pocket
64	Shopping Bag with inner pocket
66	To-Go Cup 430 ml / 14.5 oz Thermo
68	Thermo Drinking Bottle 530 ml / 18 oz
70	Drinking Bottle Tritan 500 ml / 17 oz.
72	Hip Flask 120 ml / 4 oz.
74	Sleeve 13" with side pocket
76	Card holder
78	Key Chain Short
80	Key Chain Long
82	Umbrella Small
84	Umbrella Large

80 Pride Collection

89	Espresso cup 100 ml / 3.4 oz
89	Original Mug 375 ml / 12.7 oz
90	Pride Notebooks
90	Notebook Small
90	Notebook Large
90	Set of Booklets
91	Pride Umbrellas
92	Pride Drinking bottle Tritan
93	Pride Cortado
94	Pride Key Chains

90 Culture Collection

98	Culture Mug 375 ml / 12.7 oz
100	Culture Tea cup & Espresso

102 Partnerships

The power of colors

What would life be without color? Monochrome. Black. White. Boring. We at Copenhagen Design are here to celebrate all the colors of the world, add a splash of color to everyday life, and make your day sparkle. And who is better to partner up with on that mission than PANTONE. - the world's No1. leading authority on all things color.

Copenhagen Design is the sole licensee of PANTONE in more than 70 countries within the home, office, and lifestyle range. Through close collaboration with PANTONE, all our products and colorways are approved at the PANTONE Laboratory to ensure the highest level of color accuracy. We hold the exclusive right to brand our products with official PANTONE color chip codes, which is an exact match to the professional PANTONE Color System (PCI).

Colors have never been more important than they are today. Every brand needs to stand out and shine bright, and color ownership is key to that ambition. Companies worldwide aim at showing their business in colors that define who they are and what they stand for.

At Copenhagen Design we offer your brand the possibility to take complete ownership of your brand color through our unique range of lifestyle products linking your brand to the corresponding official PANTONE color chip code. Taking your business one step closer to true brand color ownership.

We have several premium brands in our portfolio, outstanding collaborations with brands such as Valentino, Estee Lauder Group, Kate Spade New York, LMVH Group / Veuve Clicquot, Manchester United, Emirates, The Oscars / Academy Awards, Netflix and many, many more.

Copenhagen Design Aps

SHOWROOM:
Laasbybanke 10-12
DK 6000 Kolding
Denmark

Copenhagen Design LLC

900 Kings Hwy. N, Suite 302
Cherry Hill, New Jersey 08034
USA

A world infused with colors

Life is colors. This is how we see the world at PANTONE. And we experience the joy of working with colors every day.

Working professionally with colors, we recognise that no two people see colors in exactly the same way. In fact, it was with this insight in mind that we invented the PANTONE MATCHING SYSTEM® over 50 years ago.

Today, this is used daily all over the world, by art directors and designers to infuse their work with color – and ensure that their choice of color is true to their original idea.

Through the collection of PANTONE lifestyle products made by Copenhagen Design, we want to share our love of colors and enable you to express yourself through colorful accessories like a coffee cup in vibrant yellow, a key chain in daring pink or a water bottle in classic dark blue.



In the emerging world of sustainable practices and corporate social responsibility, knowing and being in control of your supply chain is increasingly essential. And Copenhagen Design wishes to sustain this focus throughout our production process.

It is about the choices we make, about being consistent. And transparent. We require of our manufacturers that they adhere to applicable laws and regulation consistently and conscientiously. We monitor the auditing processes and follow up on a regular basis.

Product sustainability

Some of the choices we make include finding sustainable materials for our products, such as the plastic product Tritan. It contains:

- no bisphenols
- Neither BPA nor BPS

Making it the safe choice for our clients – and for the end users of each item produced.

Another example is our manufacturer in Thailand who produces all our ceramics.

They focus on:

- Wastewater management
- Changing all fixtures in the factory to LED lighting.

And they have recently converted as much as a third of their electricity consumption to solar power by installing their very own solar panels on the roof of the facility.


As a part of our sustainable journey, we have made the choice to recycle our packaging to help reduce the volume of waste sent to landfill. This means that all orders made on our webshop will be sent in recycled packaging.

Working environment

Sustainability is not only about products and processes, but also about the people who work for us. It is a perpetual process of improvement, but all our manufacturers are also audited on a regular basis when it comes to living and working conditions for their employees, from safety in the workplace to worker's rights and environmental regulation.

At Copenhagen Design we welcome and applaud all improvements and continue to monitor and support the journey towards a more sustainable future in all its aspects.





**Premium retailers: Galeries Lafayette
Paris. Illum Copenhagen. MoMA New
York. Corso Como 10 Milan. Guggenheim
New York. Smithsonian Washington. La
Rinascente Italy. Les Printemps France.
Peggy Guggenheim Museum Venice. Virgin
Megastore. Design Museum Danmark.
Andy Warhol museum Pittsburgh.
Mozart Haus Vienna**

PANTONE™

Bringing color to the world

Copenhagen Design
Lifestyle Collection



Corso Como 10, Milan



Guggenheim New York



La Rinascente, Italy



Galleries Lafayette, Paris



“PANTONE 11-4201 Cloud Dancer is a lofty white that reads like a breath of fresh air. Infused with a feeling of billowy softness, Cloud Dancer conveys an inner tranquility, creating an atmosphere of serenity and spaciousness. A conscious statement of simplification Cloud Dancer provides a refuge of visual cleanliness, encouraging true relaxation and quiet focus. Offering a promise of continuity and clarity, Cloud Dancer points us towards an aesthetic free from harshness and rigidity. A futuristic utopia that is friendly, positive, and peaceful in feeling.

Leatrice Eiseman Executive Director,
Pantone Color Institute™



Color of
the Year
2026

Cloud Dancer
11-4201

PANTONE™ Color of the Year 2026

Copenhagen Design
Lifestyle Collection



PANTONE 11-4201 Cloud Dancer



Espresso
10104

Fine China Ceramic
Ø 62 x 86 x 61.5 mm
100 ml. 3.4 oz.
Colli size 6
Made in Thailand



Mug in gift box
10103

Fine China Ceramic
Ø 85 x 124 x 98 mm
375 ml. 12.7 oz.
Colli size 4
Made in Thailand



Cortado
10106

Fine China Ceramic
Thermo / Double Wall
Ø 79 x 81 x 79 mm
170 ml. 5.7 oz.
Colli size 6
Made in Thailand



Keychain Short
10130

Nylon, metal
180 x 33 mm
Colli size 10
Made in China



Keychain Long
10131

Nylon, metal
480 x 33 mm
Colli size 10
Made in China



Notebook
10159

220 x 170 x 22 mm
Colli size 6
Lined pages
FSC® Certified Paper
Made in China



Notebook Vegan Leather
10171

220 x 170 x 22 mm
Colli size 6
Vegan leather
Blank pages
Animal embossed
Made in China



Food tested.
Getestet auf
Lebensmittelechtheit.
Approuvé pour
l'alimentaire.
食品级



PANTONE™ Color of the Year 2026

Copenhagen Design
Lifestyle Collection



PANTONE 11-4201 Cloud Dancer

Original Mug Special edition



Mug in gift box 10103

Fine China Ceramic
Ø 85 x 124 x 98 mm
375 ml. 12.7 oz.
Colli size 4
Made in Thailand

PANTONE 11-4201 Cloud Dancer

Cortado Special edition



Cortado 10106

Fine China Ceramic
Thermo / Double Wall
Ø 79 x 81 x 79 mm
170 ml. 5.7 oz.
Colli size 6
Made in Thailand

Food tested.
Getestet auf
Lebensmittelechtheit.
Approuvé pour
l'alimentaire.
食品级



PANTONE™ Color of the Year 2025

Copenhagen Design
Lifestyle Collection



PANTONE 17-1230 Mocha Mousse



Espresso
10104

Fine China Ceramic
Ø 62 x 86 x 61.5 mm
100 ml. 3.4 oz.
Colli size 6
Made in Thailand



Mug in gift box
10103

Fine China Ceramic
Ø 85 x 124 x 98 mm
375 ml. 12.7 oz.
Colli size 4
Made in Thailand



Cortado
10106

Fine China Ceramic
Thermo / Double Wall
Ø 79 x 81 x 79 mm
170 ml. 5.7 oz.
Colli size 6
Made in Thailand



Keychain Short
10130

Nylon, metal
180 x 33 mm
Colli size 10
Made in China



Keychain Long
10131

Nylon, metal
480 x 33 mm
Colli size 10
Made in China



Notebook
10159

220 x 170 x 22 mm
Colli size 6
Lined pages
FSC® Certified Paper
Made in China



Notebook Vegan Leather
10171

220 x 170 x 22 mm
Colli size 6
Vegan leather
Blank pages
Animal embossed
Made in China



Food tested.
Getestet auf
Lebensmittelchtheit.
Approuvé pour
l'alimentaire.
食品级



PANTONE™ Color of the Year 2024

Copenhagen Design
Lifestyle Collection



PANTONE 13-1023 Peach Fuzz



Espresso
10104

Fine China Ceramic
Ø 62 x 86 x 61.5 mm
100 ml. 3.4 oz.
Colli size 6
Made in Thailand



Mug in gift box
10103

Fine China Ceramic
Ø 85 x 124 x 98 mm
375 ml. 12.7 oz.
Colli size 4
Made in Thailand



Cortado
10106

Fine China Ceramic
Thermo / Double Wall
Ø 79 x 81 x 79 mm
170 ml. 5.7 oz.
Colli size 6
Made in Thailand



Keychain Short
10130

Nylon, metal
180 x 33 mm
Colli size 10
Made in China



Keychain Long
10131

Nylon, metal
480 x 33 mm
Colli size 10
Made in China



Notebook
10159

220 x 170 x 22 mm
Colli size 6
Lined paper
FSC® Certified Paper
Made in China



Food testet.
Getestet auf
Lebensmittelechtheit.
Approuvé pour
l'alimentaire.
食品级



PANTONE™ Color of the Year 2023

Copenhagen Design
Lifestyle Collection



Viva Magenta 18-1750



Espresso
10104

Fine China Ceramic
Ø 62 x 86 x 61.5 mm
100 ml. 3.4 oz.
Colli size 6
Made in Thailand



Jar
10107

Fine China Ceramic
1000 ml. 34 oz
Colli size 4
Made in Thailand



Cortado
10106

Fine China Ceramic
Thermo / Double Wall
Ø 79 x 81 x 79 mm
170 ml. 5.7 oz.
Colli size 6
Made in Thailand



Mug in gift box
10103

Fine China Ceramic
Ø 85 x 124 x 98 mm
375 ml. 12.7 oz.
Colli size 4
Made in Thailand



Keychain Long
10131

Nylon, metal
480 x 33 mm
Colli size 10
Made in China



Keychain Short
10130

Nylon, metal
180 x 33 mm
Colli size 10
Made in China



Food tested.
Getestet auf
Lebensmittelechtheit.
Approuvé pour
l'alimentaire.
食品级



Work Collection





PANTONE™ Gatefold Notebooks

Copenhagen Design
Lifestyle Collection





Yellow 012



Light Pink 13-2006



Dark Green 19-5232



Gray 19-0203



Orange 17-1463



Pink 18-2143



Blue 2150



Black 19-4007



Red 18-1763



Green 16-6340



Dark Blue 19-4122



10141
Lined pages

10150
Unlined pages

11 colors.
Lined or unlined pages

160 pages
Steel printed ruler and original
PANTONE Wood pencil inside
Lined in monoColor.
Inner book size: 210 x 170 mm
Open size: 480 x 240 mm
Colli size 6

Printing: 1C1P Silk Printing
Paper: 100% Sustainable
Munken Premium 19.5
Cream 100 gm2 FSC™
Certified paper.
Cradle to Cradle Certified®
Munkedal Paper Mill, Sweden

WWW.COPENHAGEN.DESIGN



PANTONE™ Notebook Small

Copenhagen Design
Lifestyle Collection



Yellow 012



Red 18-1763



Light Pink 13-2006



Blue 2150



Green 16-6340



Gray 19-0203



Pride



Dotted pages

10151

170 x 120 x 22 mm

190 pages

Colli size 6

FSC™ Certified Paper Unlined

Made in China



PANTONE™ Notebook Large

Copenhagen Design
Lifestyle Collection



Yellow 012



Red 18-1763



Light Pink 13-2006



Green 16-6340



Blue 2150



Gray 19-0203



Pride



Dotted pages

10152

220 x 170 x 22 mm

190 pages

Colli size 4

FSC™ Certified Paper Unlined

Made in China



PANTONE™ Booklets Set of 2

Copenhagen Design
Lifestyle Collection



Yellow 012



Red 18-1763



Light Pink 13-2006



Green 16-6340



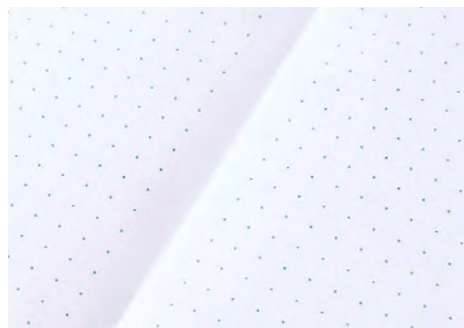
Blue 2150



Gray 19-0203



Pride



Dotted pages

10153

L: 220 x 170 x 5 mm. 40 pages

S: 170 x 120 x 5 mm. 36 pages

Colli size 6

FSC™ Certified Paper

Made in China



PANTONE™
Sticky notepad with Penhole

Copenhagen Design
Lifestyle Collection





Yellow 012



Red 18-1763



Light Pink 13-2006



Green 16-6340



Blue 2150



Gray 19-0203



10157

FSC™ Certified Paper
75 x 75 x 115 mm
920 pages
Colli size 6
Made in China

PANTONE™ Pencil Cup

Copenhagen Design
Lifestyle Collection





Yellow 012



Orange 021



Red 2035



Light Pink 182



Aubergine 229



Greenery 15-0343



Blue 2150



Cool Gray 9



Black 419



Ultra Violet 18-3838



10149

Fine China Ceramic
Ø 68 x 68 x 185 mm
Colli size 6
Made in Thailand

Food tested.
Getestet auf
Lebensmittelechtheit.
Approuvé pour
l'alimentaire.
食品级



PANTONE™ Ruler 30 cm / 12"

Copenhagen Design
Lifestyle Collection





Yellow 012



Light Pink 182



Brown 2322



Orange 021



Warm Gray 2



Black 419



Red 2035



Cool Gray 9



10147

Stainless spring steel
 23 mm x 300 mm
 Colli size 6
 Made in China

Meet Collection





PANTONE™ Candle Holders Set of 2

Copenhagen Design
Lifestyle Collection





Yellow 012



Orange 021



Red 2035



Light Pink 182



Light Green 578



Green 3539



Warm Gray 2



Light Blue 550

For standard and
tea light candles



10172

Set of two.
78 x 55 mm
Colli size 4
Fine China Ceramic
Made in Thailand

10172 Giftset mix

Yellow 012
Orange 021
Green 3539
Red 2035

10172 Giftset mix

Light Green 578
Light Pink 182
Light Blue 550
Warm Gray 2

PANTONE™
Bowl 500 ml / 17 oz

Copenhagen Design
Lifestyle Collection





Yellow 012



Orange 021



Red 2035



Violet 519



Green 3539



Blue 2150



Set of 6 in a box

10162

Fine China Ceramic
50 x 146 mm. 500 ml. 17 oz
Colli size 6 pcs pr color
Made In Thailand

10162

Set of 6 in a box
Fine China Ceramic
50 x 146 mm. 500 ml. 17 oz
Colli size 4 pcs pr color
Made In Thailand

Food testet.
Getestet auf
Lebensmittelechtheit.
Approuvé pour
l'alimentaire.
食品级



PANTONE™
Macchiato 100 ml / 3.4 oz

Copenhagen Design
Lifestyle Collection





Yellow 012



Orange 021



Red 2035



Light Pink 182



Warm Gray 2



Cool Gray 9



Brown 2322



Black 419

Sets of 4 in gift box

Black 419
Brown 2322
Cool Gray 9
Warm Gray 2

Yellow 012
Red 2035
Light Pink 182
Orange 021



10101 Single color

100 ml. 3.4 oz
Fine China Ceramic
Colli size 6 pcs pr color
Made in Thailand

10101 Gift box

100 ml. 3.4 oz
Fine China Ceramic
Colli size 6 Sets
Made in Thailand

Food testet.
Getestet auf
Lebensmittelechtheit.
Approuvé pour
l'alimentaire.
食品级



PANTONE™
Cortado 170 ml / 5.7 oz

Copenhagen Design
Lifestyle Collection





Yellow 012



Orange 021



Red 2035



Light Pink 182



Warm Gray 2



Cool Gray 9



Brown 2322



Black 419



13-0647 / 17-5104



Viva Magenta 18-1750



Peach Fuzz 13-1023

Sets of 4 in gift box

Black 419
Brown 2322
Cool Gray 9
Warm Gray 2

Yellow 012
Red 2035
Light Pink 182
Orange 021



10106 Single color

Thermo / Double wall
170 ml. 5.7 oz.
Fine China Ceramic
Colli size 6 pcs pr color
Made in Thailand

10106 Gift box

Thermo / Double wall
170 ml. 5.7 oz.
Fine China Ceramic
Colli size 6 Sets
Made in Thailand

Food tested.
Getestet auf
Lebensmittelbarkeit.
Approuvé pour
l'alimentaire.
食品级



PANTONE™
Latte 210 ml / 7.4 oz

Copenhagen Design
Lifestyle Collection





Yellow 012



Orange 021



Red 2035



Light Pink 182



Warm Gray 2



Cool Gray 9



Brown 2322



Black 419

Sets of 4 in gift box

Black 419
Brown 2322
Cool Gray 9
Warm Gray 2

Yellow 012
Red 2035
Light Pink 182
Orange 021



10102

Single color

Thermo / Double Wall
210 ml. 7.4 oz.
Fine China Ceramic
Colli size 6 pcs pr color
Made in Thailand

10102

Gift box

Thermo / Double Wall
210 ml. 7.4 oz.
Fine China Ceramic
Colli size 6 sets
Made in Thailand

Food tested.
Getestet auf
Lebensmittelechtheit.
Approuvé pour
l'alimentaire.
食品级



PANTONE™
Espresso cup 100 ml / 3.4 oz

Copenhagen Design
Lifestyle Collection





Light Yellow 600



Yellow 012



Orange 021



Red 2035



Light Pink 182



Light Purple 257



Violet 519



Aubergine 229



Light Green 578



Greenery 15-0343



Green 3539



Dark Green 3435



Light Blue 550



Blue 2150



Clear Blue 286



Dark Blue 289



Warm Gray 2



Cool Gray 9



Brown 2322



Black 419



Silver 877



Gold 10124



Bronze 876



Rosegold 10412



Ice Blue 10286



Classic Blue 19-4052



13-0647 / 17-5104



Very Peri 17-3938



Viva Magenta 18-1750



Peach Fuzz 13-1023

10104

Fine China Ceramic
Ø 60 x 86 x 61.5 mm
100 ml. 3.4 oz.
Colli size 6
Made In Thailand



Food testet.
Getestet auf
Lebensmittelechtheit.
Approuvé pour
l'alimentaire.
食品级



PANTONE™
Original Mug 375 ml / 12.7 oz

Copenhagen Design
Lifestyle Collection





Light Yellow 600



Yellow 012



Orange 021



Red 2035



Siena 5035



Light Pink 182



Light Purple 257



Ultra Violet 18-3838



Violet 519



Aubergine 229



Sage 5655



Light Green 578



Greenery 15-0343



Green 3539



Dark Green 3435



Dusty Sky 2176



Light Blue 550



Blue 2150



Clear Blue 286



Dark Blue 289



Warm Gray 2



Cool Gray 9



Brown 2322



Black 419



Silver 877



Gold 10124



Bronze 876



Rosegold 10412



Ice Blue 10286

10103

Fine China Ceramic
Ø 85 x 124 x 98 mm
375 ml. 12.7 oz.
Colli size 6
Made in Thailand



Food tested.
Getestet auf
Lebensmittelbarkeit.
Approuvé pour
l'alimentaire.
食品级



2019



16-1546

2020



19-4052

2021



13-0647 / 17-5104

2022



17-3938

2023



18-1750

2024



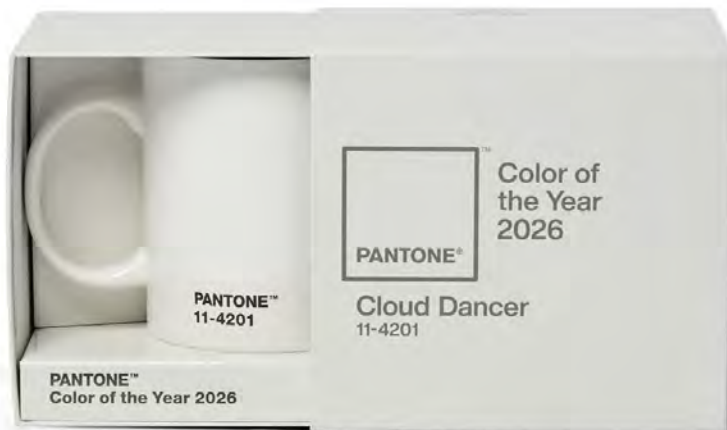
13-1023

2025



17-3938

See page 8 for
Color of the Year 2026



Mug in gift box
10103

Fine China Ceramic
Ø 85 x 124 x 98 mm
375 ml. 12.7 oz.
Colli size 4
Made in Thailand

Food tested.
Getestet auf
Lebensmittelechtheit.
Approuvé pour
l'alimentaire.
食品级



Limited Edition No. 1



Red 2035



Yellow 012



Orange 021

Limited Edition No. 2



Violet 519



Light Purple 257



Light Pink 182

Limited Edition No. 3



Light Green 578



Green 3539



Dark Green 3435

Mug in gift box
10103

Fine China Ceramic
Ø 85 x 124 x 98 mm
375 ml. 12.7 oz.
Colli size 4
Made in Thailand

51 // Meet

Food tested.
Getestet auf
Lebensmittelechtheit.
Approuvé pour
l'alimentaire.
食品级



PANTONE™
Tea cup 475 ml / 16 oz

Copenhagen Design
Lifestyle Collection





Light Yellow 600



Yellow 012



Orange 021



Red 2035



Light Pink 182



Light Purple 257



Violet 519



Aubergine 229



Light Green 578



Greenery 15-0343



Green 3539



Dark Green 3435



Light Blue 550



Blue 2150



Clear Blue 286



Dark Blue 289



Warm Gray 2



Cool Gray 9



Brown 2322



Black 419



Very Peri 17-3938

10105

Fine China Ceramic
Ø 104 x 140 x 80 mm
475 ml, 16 oz
Colli size 6
Made in Thailand



Food tested.
Getestet auf
Lebensmittelechtheit.
Approuvé pour
l'alimentaire.
食品级



PANTONE™
Jar / Vase 1000 ml / 34 oz

Copenhagen Design
Lifestyle Collection





Yellow 012



Orange 021



Red 2035



Light Pink 182



Light Blue 550



Warm Gray 2



Viva Magenta 18-1750



In gift box

10107

Fine China Ceramic
1000 ml. 34 oz
Ø 105. 170 mm tall
Colli size 4
Made in Thailand

Food tested.
Getestet auf
Lebensmittelechtheit.
Approuvé pour
l'alimentaire.
食品级



PANTONE™

**Copenhagen Design
Lifestyle Collection**



Mini Jar / Mini Vase 500 ml / 17 oz





Yellow 012



Orange 021



Red 2035



Light Pink 182



Light Green 578



Green 3539



Light Blue 550



Warm Gray 2



10163

Fine China Ceramic
140 x 84 mm
500 ml. 17 oz.
Colli size 6
Made In Thailand

Food tested.
Getestet auf
Lebensmittelechtheit.
Approuvé pour
l'alimentaire.
食品级



Move Collection





PANTONE™
Adjustable Phonestrap

**Copenhagen Design
Lifestyle Collection**





Rhodamine Red



Warm Gray 2



Pride



Yellow 012



Orange 021



Light Pink 182



Green 3539



Black 419



Red 2035



Blue 2150

10133

L 1500 mm.
Made in China

Warning: Not for childrens use

Food testet.
Getestet auf
Lebensmittelechtheit.
Approuvé pour
l'alimentaire.
食品级



PANTONE™ Tote Bag with inner pocket

Copenhagen Design
Lifestyle Collection





Yellow 012



Orange 021



Red 2035



Light Pink 182



Light Blue 550



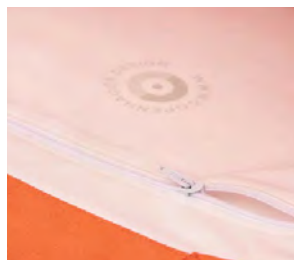
Green 3539



Warm Gray 2



Pride



10166

L: 39 cm H: 41,5 cm
350 g / 12 oz
Colli size 10
Inner pocket with zipper
100% OEKO TEX cotton
Made in Thailand

PANTONE™ Shopping Bag with inner pocket

Copenhagen Design
Lifestyle Collection





Yellow 012



Orange 021



Red 2035



Light Pink 182



Light Blue 550



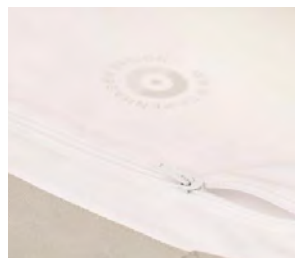
Green 3539



Warm Gray 2



Pride



10167

L: 59 cm H: 41,5 cm
350 g / 12 oz
Colli size 10
Inner pocket with zipper
100% OEKO TEX cotton
Made in Thailand

PANTONE™
To-Go Cup 430 ml / 14.5 oz Thermo

Copenhagen Design
Lifestyle Collection





Yellow 012



Orange 021



Red 2035



Light Pink 182



Aubergine 229



Greenery 15-0343



Blue 2150



Cool Gray 9



Black 419



10110

304 Food grade stainless steel, PP lid
Ø 75 x 164 mm.
430 ml. 14.5 oz
Colli size 6.
Made in China

Food tested.
Getestet auf
Lebensmittelechtheit.
Approuvé pour
l'alimentaire.
食品级



Not for Microwave

PANTONE™

**Copenhagen Design
Lifestyle Collection**



Thermo Drinking Bottle 530 ml / 18 oz



PANTONE™
419



Yellow 012



Orange 021



Red 2035



Light Pink 182



Aubergine 229



Greenery 15-0343



Blue 2150



Cool Gray 9



Black 419



10112

304 Food grade stainless steel,
Ø 74 x 190 mm
630 ml. outside, 530 ml. 18 oz. inside
Colli size 6
Made in China

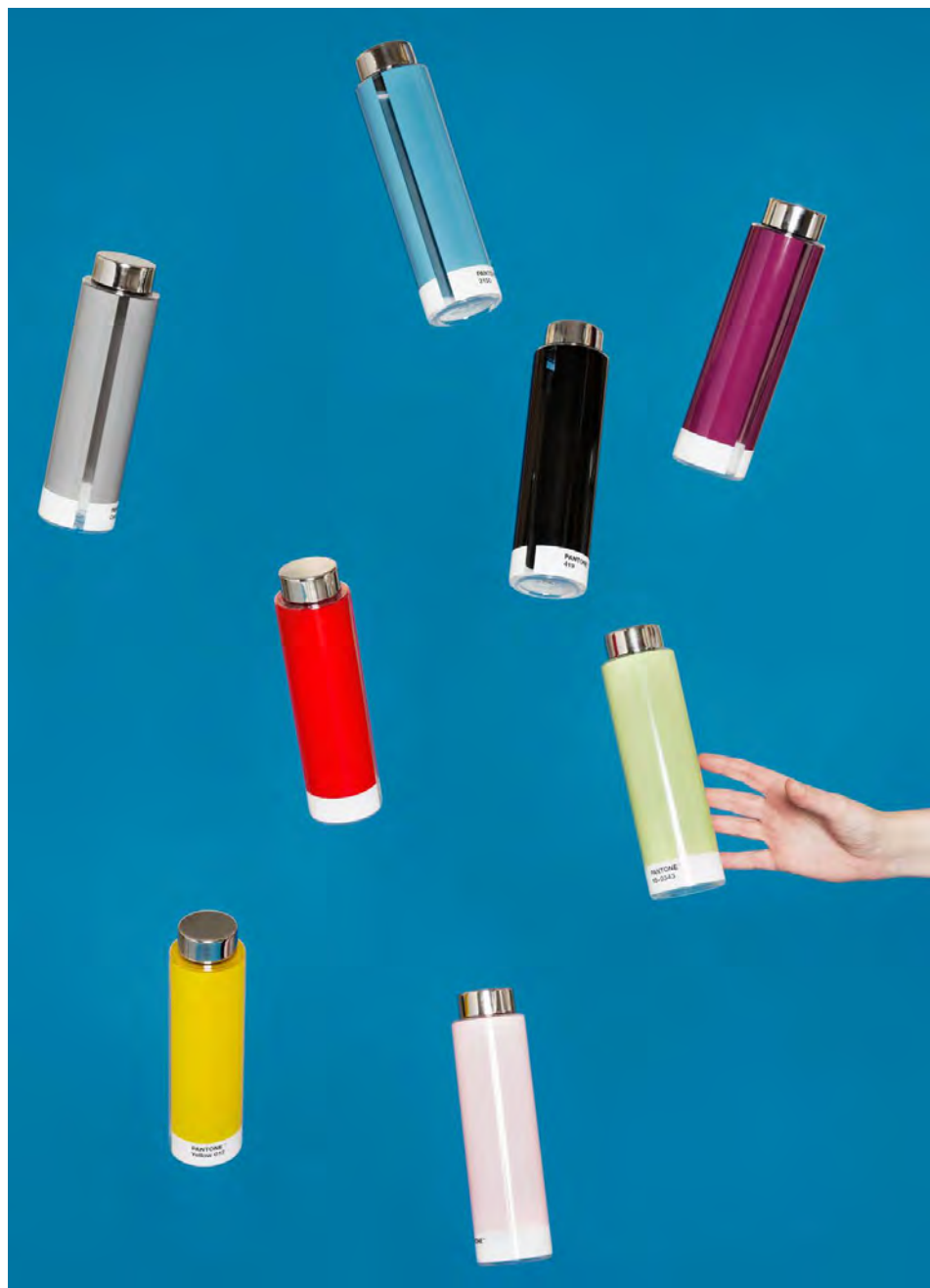
Food tested.
Getestet auf
Lebensmittelechtheit.
Approuvé pour
l'alimentaire.
食品级



Not for Microwave

PANTONE™ Drinking Bottle Tritan 500 ml / 17 oz.

Copenhagen Design
Lifestyle Collection





Yellow 012



Orange 021



Red 2035



Light Pink 182



Aubergine 229



Greenery 15-0343



Blue 2150



Cool Gray 9



Black 419



Pride

10108

Sustainable Tritan with steel lid
Ø 62 x 220 mm
500 ml. 17 oz.
Colli size 6
Made in China

Food tested.
Getestet auf
Lebensmittelechtheit.
Approuvé pour
l'alimentaire.
食品级



Not for Microwave

PANTONE™
Hip Flask 120 ml / 4 oz.

Copenhagen Design
Lifestyle Collection





Yellow 012



Orange 021



Red 2035



Light Pink 182



Greenery 15-0343



Dark Blue 289



Cool Gray 9

In gift box



10111

304 Food grade stainless steel,
120 x 60 x 22 mm
120 ml. 4 oz.
Colli size 6
Made in China

Food tested.
Getestet auf
Lebensmittelechtheit.
Approuvé pour
l'alimentaire.
食品级



Organic color decal
Not for Dishwasher
Not for Microwave

PANTONE™
Sleeve 13" with side pocket

Copenhagen Design
Lifestyle Collection





Yellow 109



Orange 021



Red 2035



Light Pink 182



Warm Grey 2



Black 419



With side pocket

10100

PANTONE Sleeve 13"
36 x 25 x 3 cm
Colli size 6
Nonfading polyester
Handmade in China





Yellow 012



Aubergine 229



Cool Gray 9



Red 2035



Greenery 15-0343



Black 419



Light Pink 182



Blue 2150



In gift box

10810

Matte and in a gift box
Quality: ABS material
95 x 60 x 11 mm
Colli size 10.
Made in China

PANTONE™ Key Chain Short

Copenhagen Design
Lifestyle Collection



10130

Nylon, metal
180 x 33 mm
Colli size 10
Made in China

Colors of the Years

2019: Living Coral 16-1546
2020: Classic Blue 19-4052
2021: 13-0647 / 17-5104
2022: Veri Peri 17-3938
2023: Viva Magenta 18-1750
2024: Peach Fuzz 13-1023



Light Yellow 600



Yellow 012



Orange 021



Red 2035



Siena 5035



Light Pink 182



Rhodamine Red C



Light Purple 257



Violet 519



Aubergine 229



Sage 5655



Light Green 578



Greenery 15-0343



Green 3539



Dark Green 3435



Dusty Sky 2176



Light Blue 550



Blue 2150



Turkis 320 C



Clear Blue 286



Dark Blue 289



Warm Gray 2



Cool Gray 9



Brown 2322



Black 419



Silver 877



Gold 10124



Bronze 876



Rosegold 10412



Ice Blue 10286



Living Coral 16-1546



Classic Blue 19-4052



13-0647 / 17-5104



Very Peri 17-3938



Viva Magenta 18-1750



Peach Fuzz 13-1023



10131

Nylon, metal
480 x 33 mm
Colli size 10
Made in China

Colors of the Years

2019: Living Coral 16-1546
2020: Classic Blue 19-4052
2021: 13-0647 / 17-5104
2022: Veri Peri 17-3938
2023: Viva Magenta 18-1750
2024: Peach Fuzz 13-1023

Warning: not to be used around
the neck, only for key chain use.



Light Yellow 600



Yellow 012



Orange 021



Red 2035



Siena 5035



Light Pink 182



Rhodamine Red



Light Purple 257



Violet 519



Aubergine 229



Sage 5655



Light Green 578



Greenery 15-0343



Green 3539



Dark Green 3435



Dusty Sky 2176



Light Blue 550



Blue 2150



Turkis 320



Clear Blue 286



Dark Blue 289



Warm Gray 2



Cool Gray 9



Brown 2322



Black 419



Silver 877



Gold 10124



Bronze 876



Rosegold 10412



Ice Blue 10286



Living Coral 16-1546



Classic Blue 19-4052



13-0647 / 17-5104



Very Peri 17-3938



Viva Magenta 18-1750



Peach Fuzz 13-1023

PANTONE™ Umbrella Small

Copenhagen Design
Lifestyle Collection



In unique travelbox with
Key Chain as handle





Yellow 012



Orange 021



Red 2035



Light Pink 182



Cool Gray 9



Black 419



Pride



Pride travel case

10161

Ø 100 CM

Graphite. Steel,
Foldable 210 Sponge Material.
Black inside mirror. Ø 100 cm
Colli size 6 each color
Made in China

PANTONE™ Umbrella Large

Copenhagen Design
Lifestyle Collection



For two people





Yellow 012



Orange 021



Red 2035



Light Pink 182



Cool Gray 9



Black 419



Pride



Umbrella Large Tube

10160

Ø 130 CM

Graphite. Steel, Foldable
210 Sponge Material
Black inside mirror. Ø 100 cm
Colli size 6 each color
Made in China

Pride Collection





For each Pride product you buy from Copenhagen Design, you donate a contribution to Copenhagen Pride, to support equality and inclusion for all mankind.



Espresso cup 100 ml / 3.4 oz



10104

Fine China Ceramic
Ø 60 x 86 x 61.5 mm
100 ml. 3.4 oz.
Colli size 6
Made In Thailand



Original Mug 375 ml / 12.7 oz



10103

Fine China Ceramic
Ø 85 x 124 x 98 mm
375 ml. 12.7 oz.
Colli size 6
Made in Thailand



In Gift Box

Food tested.
Getestet auf
Lebensmittelechtheit.
Approuvé pour
l'alimentaire.
食品级



PANTONE Pride Notebooks

Copenhagen Design
Lifestyle Collection



Notebook Small



Pride Dotted pages

10151

170 x 120 x 22 mm
190 pages
Colli size 4
FSC™ Certified Paper Unlined
Made in China

Notebook Large



Pride Dotted pages

10152

220 x 170 x 22 mm
190 pages
Colli size 4
FSC™ Certified Paper Unlined
Made in China

Set of Booklets



Pride Dotted pages

10153

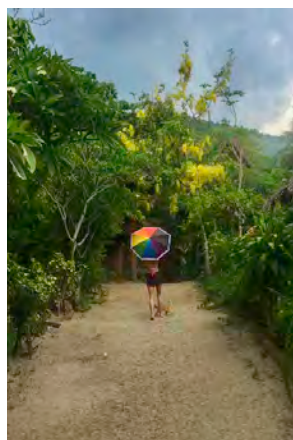
L: 220 x 170 x 5 mm. 40 pages
S: 170 x 120 x 5 mm. 36 pages
Colli size 6
FSC™ Certified Paper
Made in China

PANTONE Pride Umbrellas

Copenhagen Design
Lifestyle Collection



Pride Umbrella Large



Pride Umbrella Small



10160

Large Ø 130 CM

Graphite. Steel, Foldable
210 Sponge Material
Black inside mirror.
Colli size 6 each color.
Made in China

10161

Small Ø 100 CM

Graphite. Steel, Foldable
210 Sponge Material.
Black inside mirror
Colli size 6 each color
Made in China

PANTONE™ Pride Drinking bottle Tritan

Copenhagen Design
Lifestyle Collection



10108

Sustainable Tritan with steel lid
Ø 62 x 220 mm
500 ml. 17 oz.
Colli size 6
Made in China



Food tested.
Getestet auf
Lebensmittelechtheit.
Approuvé pour
l'alimentaire.
食品级



Not for Microwave

PANTONE™ Pride Cortado

Copenhagen Design
Lifestyle Collection



4x170 ml / 5.7 oz in gift box



10106001

Set of 4 in gift box

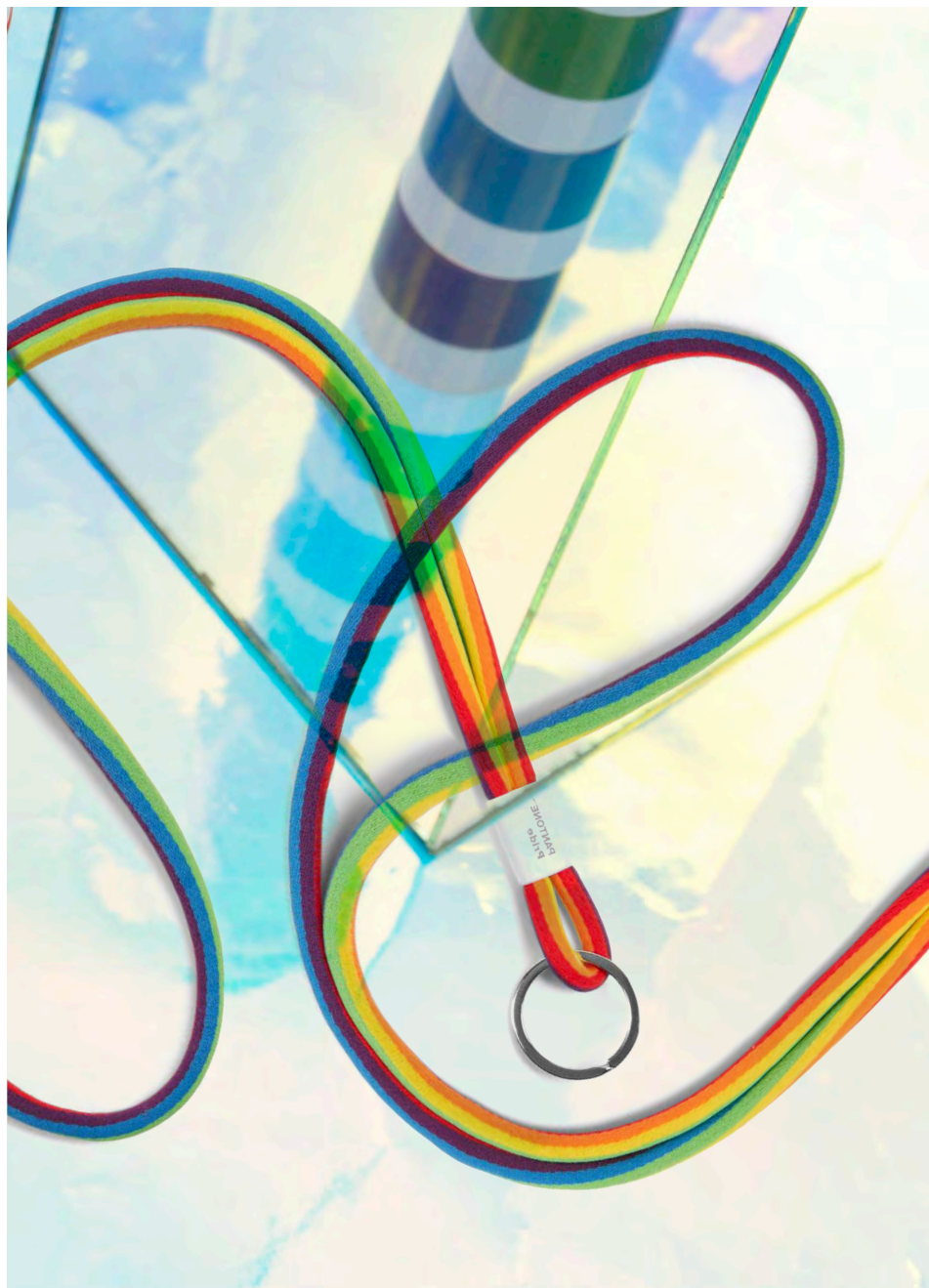
Thermo / Double wall
170 ml. 5.7 oz.
Fine China Ceramic
Colli size 6 / set of 4

Food testet.
Getestet auf
Lebensmittelechtheit.
Approuvé pour
l'alimentaire.
食品级



PANTONE™ Pride Key Chains

Copenhagen Design
Lifestyle Collection



Pride Key Chain Short



Pride Key Chain Long



10130
Short

Nylon, metal
180 x 33 mm
Colli size 10
Made in China

10131
Long

Nylon, metal
480 x 33 mm
Colli size 10
Made in China

Warning: not to be used around
the neck, only for key chain use.

Culture Collection

Culture is a symbiose of skin colors from the PANTONE SkinTone Guide. The Culture Collection is a collaboration between Danaher and Copenhagen Design.





PANTONE™
Culture Mug 375 ml / 12.7 oz

Copenhagen Design
Lifestyle Collection





10103

In gift box

Fine China Ceramic
Ø 85 x 124 x 98 mm
375 ml. 12.7 oz.
Colli size 4
Made in Thailand

Food tested.
Getestet auf
Lebensmittelechtheit.
Approuvé pour
l'alimentaire.
食品级



PANTONE™ Culture Tea cup & Espresso

Copenhagen Design
Lifestyle Collection





Culture Tea cup

10105

Fine China Ceramic
Ø 104 x 140 x 80 mm
475 ml. 16 oz
Colli size 6
Made in Thailand



Culture Espresso

10104

Fine China Ceramic
Ø 60 x 86 x 61.5 mm
100 ml. 3.4 oz.
Colli size 6
Made In Thailand

Food tested.
Getestet auf
Lebensmittelechtheit.
Approuvé pour
l'alimentaire.
食品级



Partnerships





A World of Color by Copenhagen Design

**Imagine life without color.
Black. White. Monotonous.**

At Copenhagen Design, we celebrate the vibrant colors that surround us, adding brilliance to everyday life. That's why our partnership with PANTONE™, the world's color authority, is so perfect.

As the official Pantone licensee for home, office, and lifestyle products across 70+ countries, we ensure every item meets exacting standards. Each product is verified in Pantone's Laboratory for precise color accuracy and features official Pantone Color Numbers that exactly match the professional Pantone Color Systems.

In today's competitive marketplace, color defines brand identity. Copenhagen Design offers your business the opportunity to claim true ownership of your brand color



through our premium lifestyle products, connecting your visual identity to official Pantone Color Numbers.

Our impressive client portfolio includes collaborations with global brands like Valentino, Estée Lauder Group/Clinique, Kate Spade New York, LVMH Group/Veuve Clicquot, Manchester United, Emirates, The Academy Awards, Netflix, and many others.

Let us help you truly own your brand color while providing exceptional, high-end products perfect for client gifts, brand stores, team uniforms, or marketing campaigns.

The possibilities are endless—and essential.

PANTONE™

X

Netflix

A Spectrum of Color, Connection, and Celebration

When NETFLIX sought to create memorable gifts for their global network of filmmakers, actors, and production teams, they turned to Copenhagen Design for a solution that captured their iconic brand essence. Drawing inspiration from Netflix's distinctive animated "ident"—where the "N" transforms into vibrant beams of colored light—we developed an exclusive six-piece latte cup collection. Each cup features a different bright hue from the Netflix color spectrum, elegantly presented in custom packaging that mirrors the streaming platform's signature visual identity. The success of this initial collaboration has sparked development of additional branded items including tote bags, premium notebooks, lanyards, and drinking bottles—all designed to celebrate Netflix's colorful creative community.





PANTONE™

x

Valentino

Valentino's Pink PP: From Runway to Everyday Luxury

When European fashion powerhouse Valentino created their iconic Pink PP hue—the result of meticulous testing, refinement, and artistic vision—they sought a partner who could translate this distinctive color beyond the catwalk. Copenhagen Design proudly collaborated with Valentino and PANTONE to transform this vibrant signature shade into tangible lifestyle products, maintaining its precise energy and essence.

The resulting special-edition collection allows admirers worldwide to incorporate authentic Pink PP into their daily lives. Each item represents not just a luxury purchase, but a connection to Valentino's pioneering fashion legacy through color ownership that's both exclusive and accessible—bringing runway sophistication into homes and personal spaces with uncompromising authenticity.





**Pink PP
by Valentino**

Color created with
PANTONE®



PANTONE™

X

Oscar Gold

The Oscars: From Iconic Gold to Exclusive Lifestyle Collection

When the Academy of Motion Picture Arts and Sciences approached Copenhagen Design with a challenge to capture the essence of the iconic Oscar statuette in product form, we embraced the opportunity to work with Hollywood's most recognized symbol. Our design team meticulously matched the distinctive gold hue that has represented cinematic excellence for generations, creating an exclusive lifestyle collection worthy of the Academy's prestigious heritage. Today, these PANTONE-perfect products serve dual purposes that elevate the Oscar brand beyond the ceremony itself. They're presented as exclusive gifts to industry luminaries while also being available to film enthusiasts at the official Academy Museum Store in Hollywood—allowing the unmistakable golden legacy of the Oscars to extend from the red carpet into everyday life.





PANTONE™

X

Jägermeister

Evolving a Legacy Through Color

When iconic spirits brand Jägermeister embarked on their journey to connect with younger audiences while promoting responsible consumption, they recognized the power of lifestyle products to carry their refreshed identity. Copenhagen Design partnered with Jägermeister to develop an exclusive collection featuring their updated color scheme, creating tangible extensions of their evolving brand story beyond the bottle.

Beginning with heritage-inspired hip flasks and mugs that honor Jägermeister's rich origins, our collaboration continues to expand with candleholders, latte cups, and decorative jars in development. This thoughtfully curated collection represents more than merchandise—it's a strategic transformation enabling Jägermeister to transcend its traditional après-ski associations and emerge as an authentic lifestyle brand that resonates across occasions and generations.





PANTONE™

X

Estee Lauder Group, Clinique

Building Brand Cohesion Through Signature Color

When global skincare leader Clinique needed to strengthen their visual identity across customer touchpoints, they turned to Copenhagen Design to bring their iconic Clinique Green to life beyond product packaging. What began as a request for perfectly color-matched notebooks for sales associates—enabling consultants to elegantly record customer skin assessments and product recommendations during in-store consultations—evolved into something much more significant.

The successful collaboration has since expanded into a comprehensive collection including sophisticated coffee mugs in premium gift boxes, branded lanyards, and exclusive tote bags—all featuring the precise PANTONE-authenticated Clinique Green. This thoughtfully curated range not only reinforces brand recognition but transforms everyday items into ambassadors of Clinique's commitment to quality and attention to detail, creating cohesive experiences for both team members and loyal customers worldwide.





PANTONE™

X

Manchester United

Bringing Club Colors from the Pitch to Passionate Fans

When global football giant Manchester United sought to extend their iconic identity beyond the stadium, they partnered with Copenhagen Design to capture their legendary Manchester Red (PANTONE 186 C) in a premium lifestyle collection. The result is an exclusive product range that allows devoted supporters worldwide to incorporate the authentic “Red Devils” spirit into their everyday lives through the official Manchester United web shop.





PANTONE™

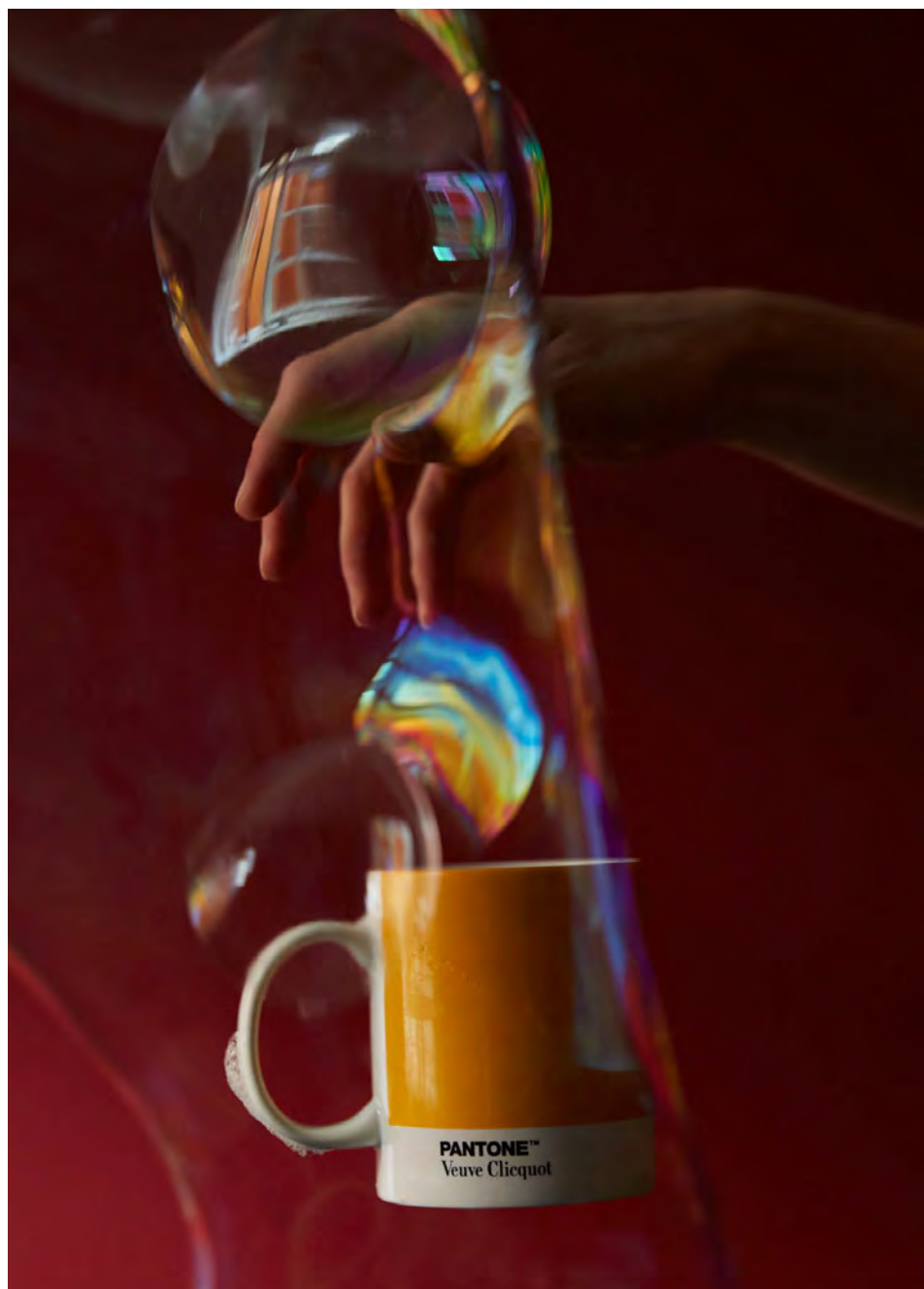
X

Veuve Clicquot

Championing Yellow Beyond the Bottle

When prestigious champagne house Veuve Clicquot sought to extend their iconic yellow identity beyond their legendary Brut Yellow Label, Copenhagen Design answered the call to create something extraordinary. Working with the LVMH Group's signature "Yellow Widow" hue—perhaps one of the most recognizable color associations in luxury beverages—we developed a precisely color-matched lifestyle collection that captures the brand's sophisticated essence. These meticulously crafted products now form a central element in Veuve Clicquot's permanent campaign universe, allowing admirers to experience the champagne's distinctive personality through everyday objects that carry the same commitment to excellence as the celebrated bubbles themselves.





PANTONE™

X

Kate Spade, New York

Extending Brand Essence Through Color

When iconic fashion house Kate Spade New York created their distinctive Kate Spade Green in partnership with Pantone, they sought a way to extend this signature color beyond fashion into lifestyle products that embodied their brand essence. Copenhagen Design transformed this distinctive hue into premium cups and notebooks that serve dual purposes—elevating internal management meetings while offering devoted customers authentic pieces of the Kate Spade experience through their international web shop and retail locations. This thoughtful color extension allows the brand's unique personality to integrate seamlessly into both corporate culture and the everyday lives of their global community.





PANTONE™

X

Emirates Gold

Emirates: Elevating the Golden Experience Beyond the Skies

When global aviation leader Emirates sought to strengthen their exclusive Business Gold membership experience, they partnered with Copenhagen Design to extend their prestigious golden identity beyond the aircraft cabin. While the airline is renowned for its signature red branding, the Business Gold tier demanded something truly exceptional—a bespoke collection of premium lifestyle products including elegant tote bags, custom-boxed umbrellas, refined lanyards, and sophisticated notebooks. This meticulously crafted golden collection is now available exclusively to Business Plus members in-flight, through the Emirates web shop, and in select airport locations—culminating in the ultimate luxury touch: sipping your complimentary coffee from a perfectly color-matched gold mug while soaring through the skies in Business Gold class.





PANTONE™

X

Parajumpers

Capturing Technical Luxury in Everyday Design

When Italian luxury outerwear brand Parajumpers—inspired by the elite rescue teams of Anchorage, Alaska—sought to extend their distinctive aesthetic beyond apparel, they turned to Copenhagen Design for a precision solution. Known for blending technical innovation with high fashion, Parajumpers’ identity is anchored in signature elements like their “That Others May Live” motto and the iconic yellow parachute-hook collar straps that grace their premium garments. Our collaboration focused on distilling this sophisticated adventure-ready spirit into a clean, minimalist pencil cup crafted in the exact Parajumpers 165 C color. The result is an elegant desk accessory that seamlessly translates the brand’s commitment to functionality and refined design into everyday objects, allowing admirers to experience the Parajumpers ethos beyond their wardrobe.





PANTONE™

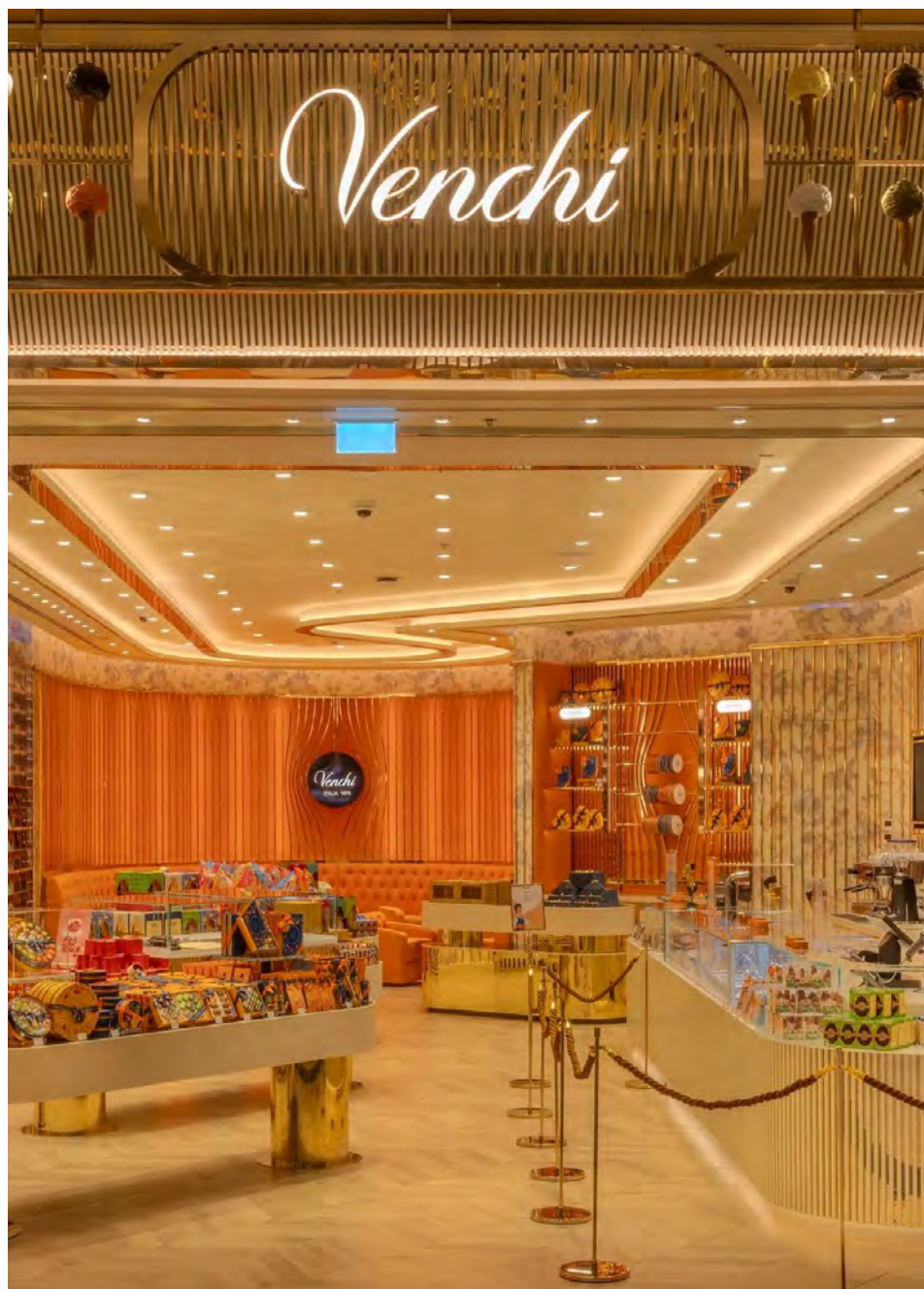
X

Venchi

Sweet Italian Legacy in Perfect Color

When legendary Italian chocolatier Venchi—a brand with over 145 years of heritage bringing the essence of Italian indulgence to more than 70 countries worldwide—sought to extend their sensory experience beyond confections, they partnered with Copenhagen Design for a touch of color brilliance. Our collaboration resulted in a carefully curated collection including precisely color-matched lanyards and elegant macchiato cups, each bearing both the distinguished Venchi logo and its unique PANTONE color code. These premium items have found a special place nestled within Venchi's beloved Easter eggs—transforming seasonal chocolate gifts into lasting brand experiences that capture the authentic Italian passion for life's finest pleasures in every perfectly colored detail.





PANTONE™

X

F.C. København

Bringing Club Pride from Stadium to Lifestyle

When Denmark's most celebrated football club, F.C. København, sought to extend their iconic presence beyond the pitch, they partnered with Copenhagen Design to capture their signature blue (PANTONE 293 C) in a premium lifestyle collection. Our collaboration transformed the club's rich heritage and passionate identity into an exclusive range of products that speak to both dedicated supporters and design enthusiasts alike. The resulting collection seamlessly merges functional elegance with F.C. København's unmistakable aesthetic, allowing fans to carry their club pride into everyday life through perfectly color-matched items that honor the team's storied legacy and championship culture.







PANTONE™
Lifestyle Collection